



Chemo Port Pillows



What you need:

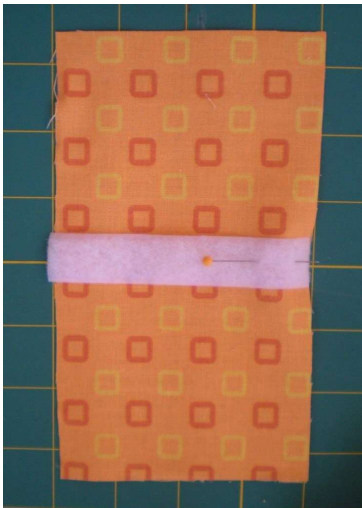
Fabric for (2) 7x4 inch rectangles.

Velcro 5/8-inch width – the sew-on kind, not with sticky backing

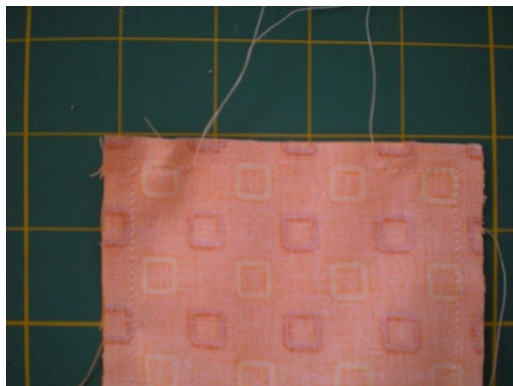
Fiber fill stuffing

Thread

Cut two 7-x-4-inch pieces of fabric.



Cut velcro 3 1/2 “ Machine baste one side of Velcro to right side of fabric – fuzzy/loopy side up. Stitch only one end of Velcro, leaving the other end free. Baste other half of Velcro strip to opposite side of fabric – loopy side down.



Put fabric pieces right sides together and make 1/4-inch seam all the way around, leaving an opening about 1 1/2 – 2 inches at one end. Be sure not to catch the “free” ends of the Velcro pieces in the seam. Turn right side out and stuff. Whip stitch the opening to finish.

