



## Safety Tips

- Never conduct roadside activities when weather conditions might effect a driver's vision or when driving conditions are questionable. Limit activities to full daylight and fair weather days. Keep in mind, this activity is conducted in a heavily trafficked high-speed zone.
- Each group should review the Guidelines for Litter Pickup/Traffic Control Plan for Volunteer Group Litter Pickup **and** Bag It, Move It, Leave It before each activity.
- Use the Litter Traffic Plan for signage, it's not only a good idea, its federal law.
- Have a first-aid kit available. Take extra gloves, sunscreen and water.
- We **require** all participants were an ITD issued Class 3 Reflective Safety Vest.
- We recommend wearing gloves, long pants and sturdy closed toe shoes.
- Headsets/earbuds can interfere with your ability to hear oncoming traffic or other potential hazards and should not be worn.
- Items that might cause injury, such as axes, knives, machetes, etc., should not be carried during litter pickup.
- **DO NOT** conduct litter pickups on the roadway, bridges, tunnels, curved roadway sections, overpasses or in construction zones. These areas are especially dangerous for pedestrians.
- Stay clear of mowing operations and maintenance or construction activities.
- Be alert for snakes, stinging insects & poison ivy. Be cautious around tall grass and old logs.

- Don't try to make room in your litterbag by jumping or pushing down on it. You could cut yourself or the bag may rip and you might end up picking the litter up all over again.
  
- Avoid overexertion by resting when you need to and drinking plenty of water, especially on warm days.
  
- Never possess or consume alcoholic beverages or illegal drugs while on the adopted section.
  
- Leave roadkill. Report its location when returning your supplies.
  
- Never pick up questionable material. Leave and report the location of any drug paraphernalia or bodily fluids (Bottle Bombs) when returning your supplies.

# **Bag It, Move It or Leave It on the Roadside**

A Guide for Roadside Litter Pickup

**\*\* Never Bag or Move an item that may cause or risk injury \*\***

## **Bag These Items:**

- Small items made of paper, cardboard, plastic, Styrofoam, wood, rubber, glass or metal without sharp edges.
- Small containers without sharp edges

Leave the trash bags on the roadside, away from traffic, and ITD staff will retrieve and dispose of them.

We encourage groups to take recyclables to a recycling facility. Any compensation received from recycling is the property of the volunteer group.

## **Move These Items; Place by Bags to be Picked Up by ITD Personnel:**

- Items with edges that may tear the trash bag
- Items that would prevent the bag from being tied shut (allowing the trash to be blown back onto the roadway)
- Heavy items that may tear the trash bag
- Containers that are not empty if the contents won't spill when moved and you can identify that the contents are not hazardous or bio waste. When in doubt, leave it.

## **Leave These Items in Place and Report the Location to the Shed When Returning Equipment:**

- Sharp, Large and heavy objects that may cause injury if moved.
- Any item in an unsafe location (near traffic lanes, blind curves, overpasses, bridges, unstable ground, etc.)
- Animal carcasses, Contact Fish and game for removal
- Chemicals, motor oils or fuels, paint and batteries

## **Leave These Items in Place and Contact:**

- Items with Hazardous Material Warning Labels, please contact either the County Sheriff Non Emergency dispatch or ISP. You will need to provide highway and mile marker info.
- Any item you cannot identify or believe to be hazardous (drug paraphernalia, bodily fluids, powdery substances, explosives, ammunition, medicines, etc.) Methamphetamine drug lab waste can be found in many shapes and forms. Propane cylinders from grills are used to transport anhydrous ammonia. The ammonia can burn skin and cause severe respiratory damage. Other lab waste can include medicine boxes, pill residue (pink or red toned putty looking substance) respirator masks, rubber gloves, rubber hosing and clamps, Pyrex and corning type containers with rubber hoses attached.

Examples of Hazardous Materials Labels.



# TRAFFIC CONTROL PLAN FOR VOLUNTEER GROUP LITTER PICKUP

FIGURE 1

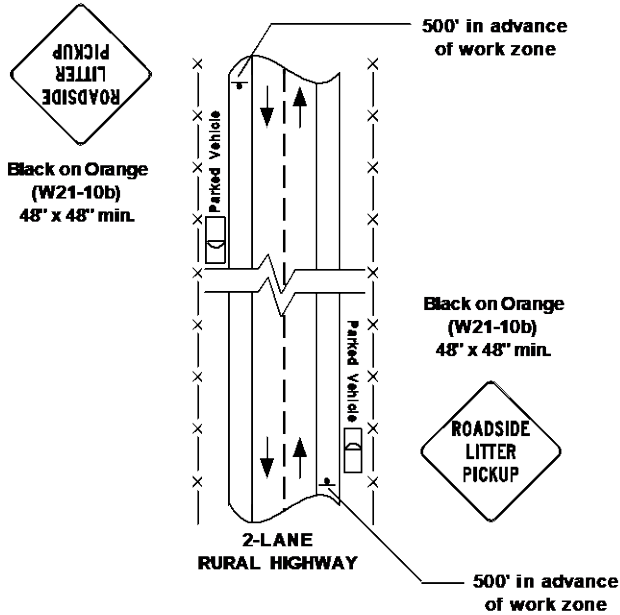
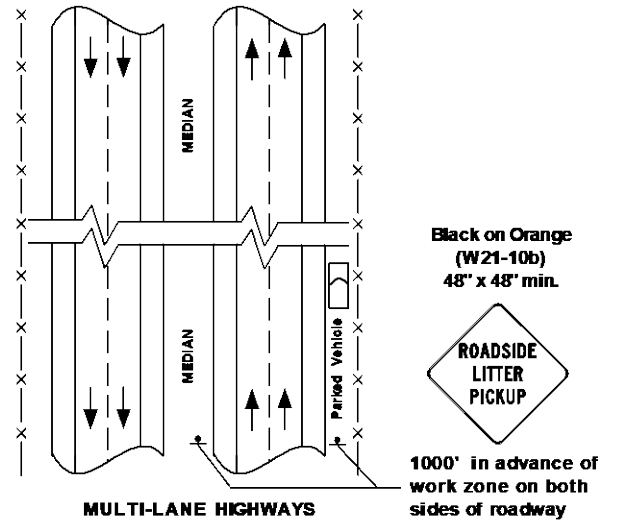
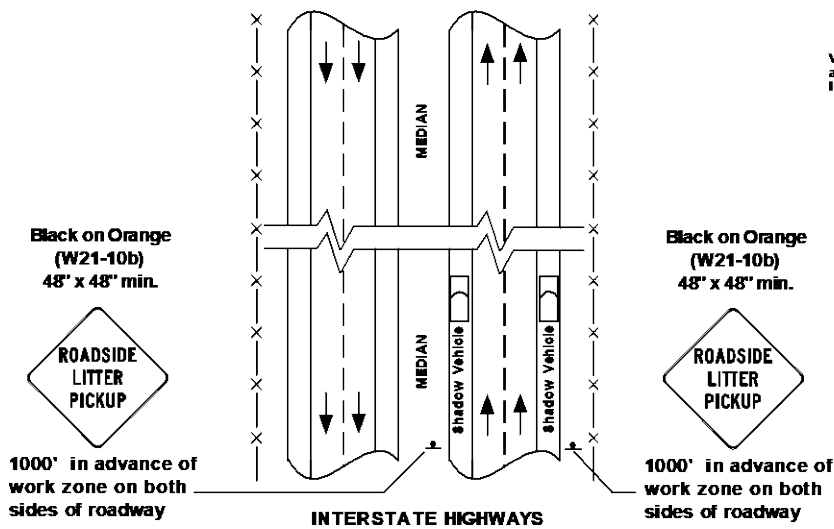


FIGURE 2



Vehicles should be parked off the roadway shoulder as near as possible to the right-of-way fence or boundary line.

FIGURE 3



Shadow vehicle should be used on outside shoulder or inside shoulder, but never both shoulders at once.

\*\* OPTIONAL \*\* Signing can be added to the back of shadow vehicles for additional advance warning.

# GUIDELINES FOR LITTER PICKUP

**NOTE:** The design, installation and use of all traffic control devices, must comply with the Manual on Uniform Traffic Control Devices (MUTCD), as adopted by the State. All sign sheeting must meet ASTM 4956 D TYPE III or greater retro reflectivity standards. Sign stands and sign installations must comply with NCRHP-350 crash standards.

## Litter Pickup –

**Two-Lane Two-Way Roadways** -- Participants are restricted to one side of the roadway between the right-hand edge of the pavement and the right-of way fence or boundary at any one time. Litter on the pavement is **NOT** picked up by participants. Crossing back and forth over the roadway is prohibited on two-lane rural highways.

**Multiple Lane Divided/Interstate** -- Participants working within a median area shall be restricted to the minimum number of crossings required to gain ingress and egress from the median area. It is recommended that the transport vehicle be used to transfer the participants from working on the outside shoulder area to the median area. The transport vehicle can be used as a shadow vehicle (see definition below) to protect workers and minimize the potential for accidents.

**Parking** -- Volunteer groups should park their vehicles off the roadway shoulder and as near to the right-of-way fence as possible. It is recommended that a minimum number of vehicles be used to transport participants to the litter pickup area.

**Safety Vests** -- Participants must wear the ITD supplied safety vests during litter pickup.

**Shadow Vehicle** – A vehicle used to give advance notice of work taking place through the means of either additional signing mounted on the rear of the vehicle, flashing emergency lights or a flashing rotating beacon. Shadow vehicles, when used, should be parked in advance of the work taking place or be used to follow a moving operation at a distance to give additional protection to the workers. When one large vehicle (van or bus) is used to transport the volunteers, it may be parked on the shoulder closest to the litter pickup where it can act as a shadow vehicle for additional protection of the participants. This would allow parking on the inside shoulder for Median pickup or the outside shoulder for litter pickup between the shoulder and the right-of-way fence. If used as a shadow vehicle it will be required to have safety flashers or a rotating flashing beacon in operation during the litter pickup and be parked as close as possible to the outside edge of the roadway shoulder. Supplemental signing mounted on the back of the shadow vehicle may also be used to give additional advance notice to the traveling public.

**Signing** -- Traffic control signs should be mounted on temporary stands and placed adjacent to the edge of the shoulder.

**Two Lane Two Way Roadways (Figure 1)**-- Traffic control signs should be placed on both sides of the roadway where litter pickup is taking place. Signing should be at least 500 feet in advance of each end of the litter pickup section for each direction of travel. The lower edge of the sign must be mounted a minimum of one foot (1') above the roadway surface.

**Multiple Lane Divided/Interstate (Figures 2 and 3)** -- Signing should be placed on both sides of the travel lanes a minimum of 1000 feet in advance of the litter pickup area. Signs must be mounted with the lower edge of the sign a minimum of six feet (6') above the roadway shoulder. If a shadow vehicle is used for litter pickup on Interstate roadways, consideration should be given to mounting supplemental signing on the back of the shadow vehicle that restates the “Roadside Litter Pickup” message.